

Zip up Curved Display

SETUP INSTRUCTION

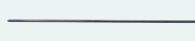
ITEMS INSIDE THE BOX



(2) Curved Poles



(2) Straight Poles



(1) Center Pole



(4) Corner Poles



(2) Light Clips



(2) LED Lights
(Optional)



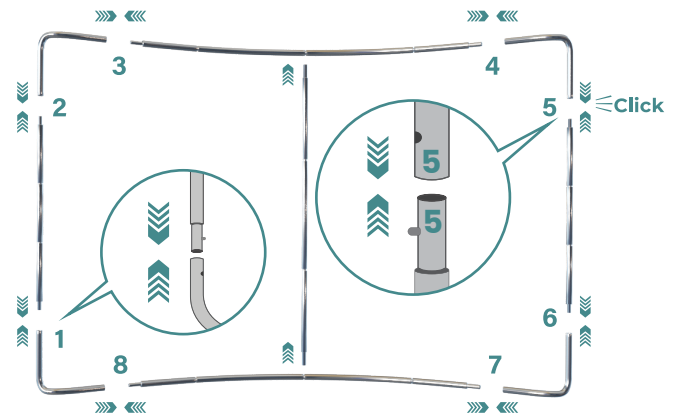
(1) Backdrop Graphic

01

FRAME ASSEMBLY

Connecting the poles each based on the numbers mentioned on them.

Match numbers 1 to 1,2 to 2, etc.



GRAPHIC INSTALLATION

Carefully put the fabric print over the frame from left to right, ensuring both sides are covered completely.

It helps to have a second person to pull the other side simultaneously.

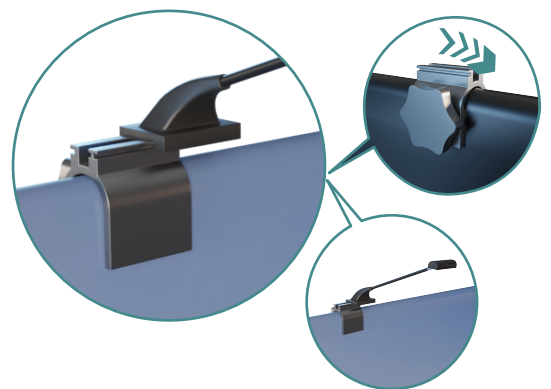
02

03

ATTACHING LED LIGHTS (OPTIONAL)

Attach the clips tightly on the backside of the frame and slide the lights into the clips.

To avoid stripping the light clips, do not twist the knobs too tight.



DISPLAY ALIGNMENT

Stand the frame straight and twist the corners until the fabric is aligned. Plug the lights and you are all set to make the best out of your display.

You can adjust the frame alignment by having a person on each side. Gently shift the top corners until the display stands completely straight.

04