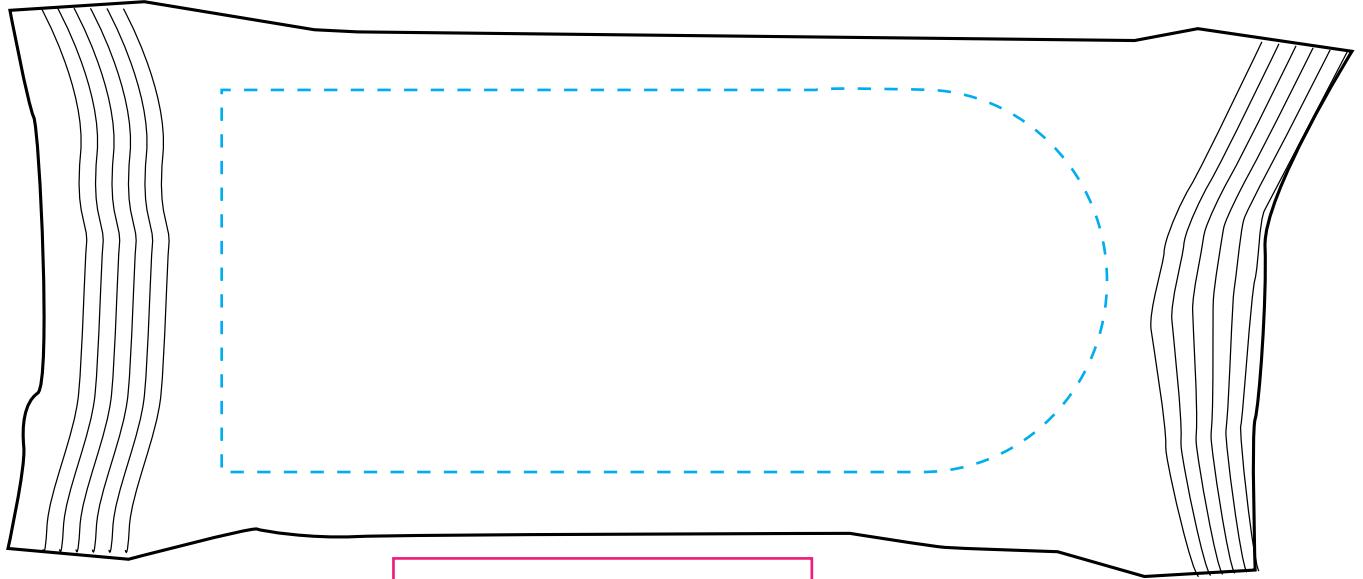


# CF 100

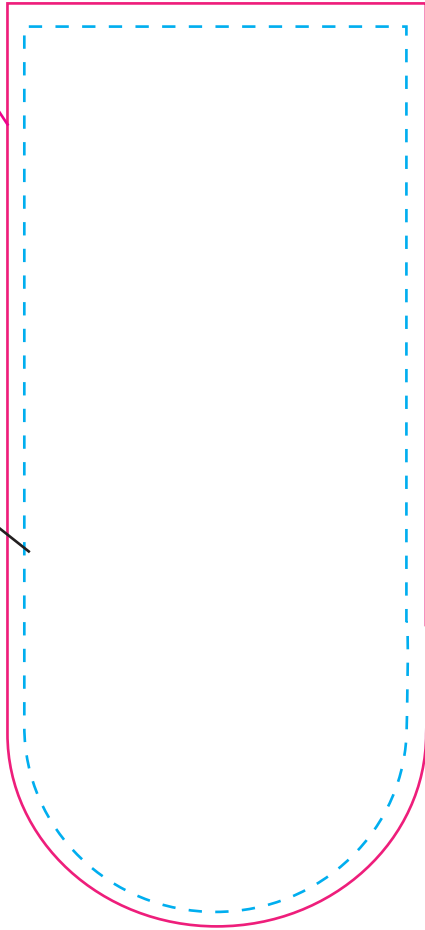
## Cafe

### Gourmet Coffee



BLEED LINE

CUT LINE



Item# CF100

Item Size: 3" W x 7" H

Max Imprint Area: 2" W x 5" H (Indicated by Dotted Line - Does Not Print)

Imprint Method: 4CP LABEL

# DRK1280

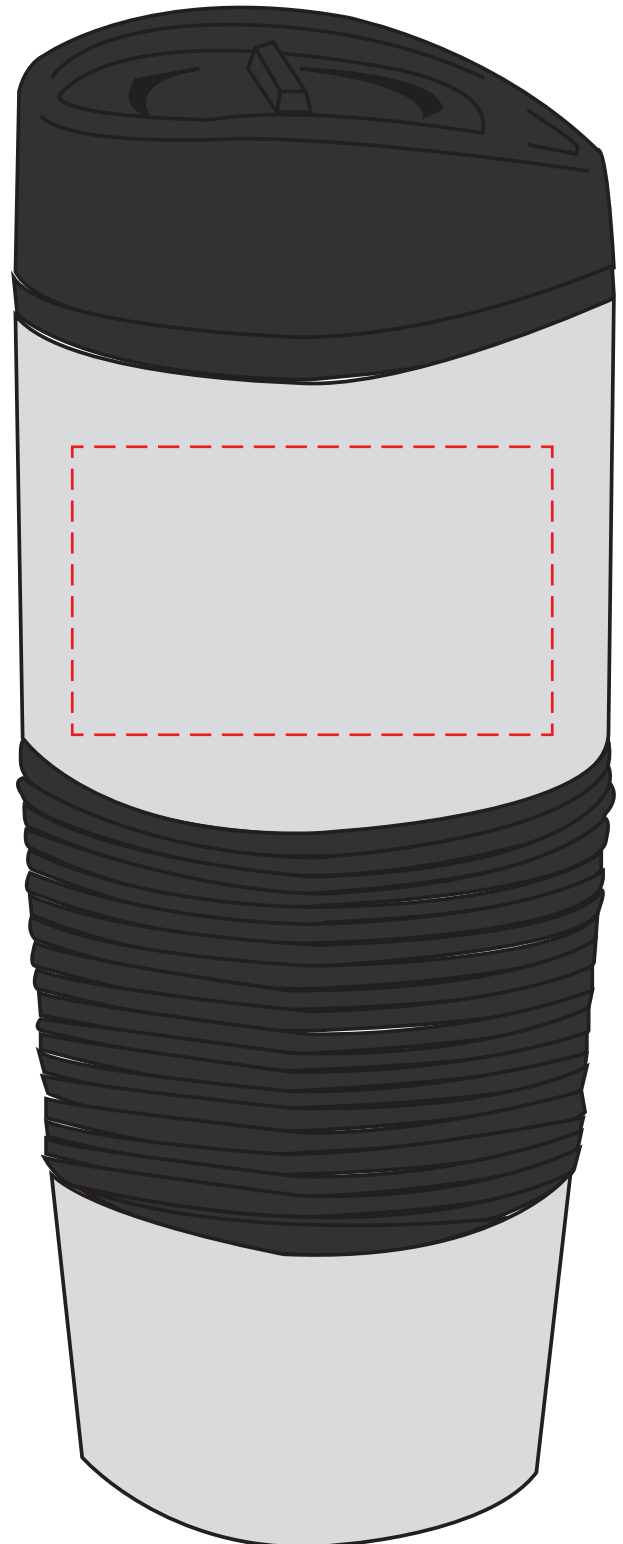
16oz. stainless steel tumbler with rubber sleeve

## SINGLE SIDE IMPRINT AREA

(INDICATED BY MAGENTA DASHED LINE)



Artwork @ 100%



**Item Number: DRK1280**

Item Size: 3 1/8" W x 8" H

Max Imprint Area (Indicated By Dotted Line, Does Not Print)

Imprint Method: **SILKSCREEN (ONE COLOR ONLY)**

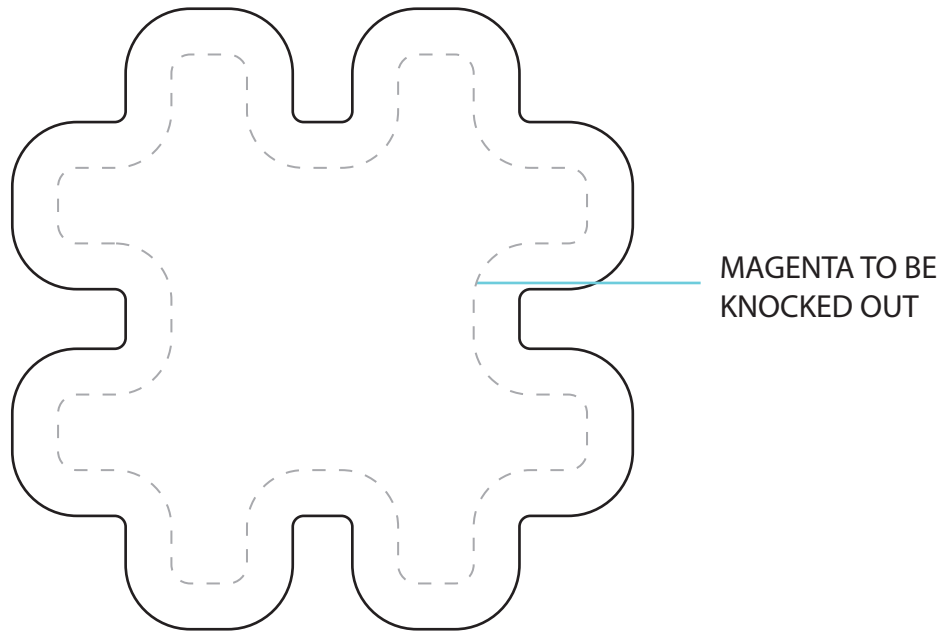
# MMK-Mute Inside Label

Imprint Area (Logo Drop): 5"W x 1"H  
Custom Label (Full Sheet): 8"W x 5"H



# MTR5081 (HashTag Tin)

Silver Tin w/ Full Color Imprint



MAGENTA TO BE  
KNOCKED OUT

PRODUCT SIZE AT 100%  
This is the actual size of your  
logo on this product

## 1.75oz WRAPPER BAR



MMK-MUTE  
2" ROUND LABEL  
OUTSIDE LABEL

