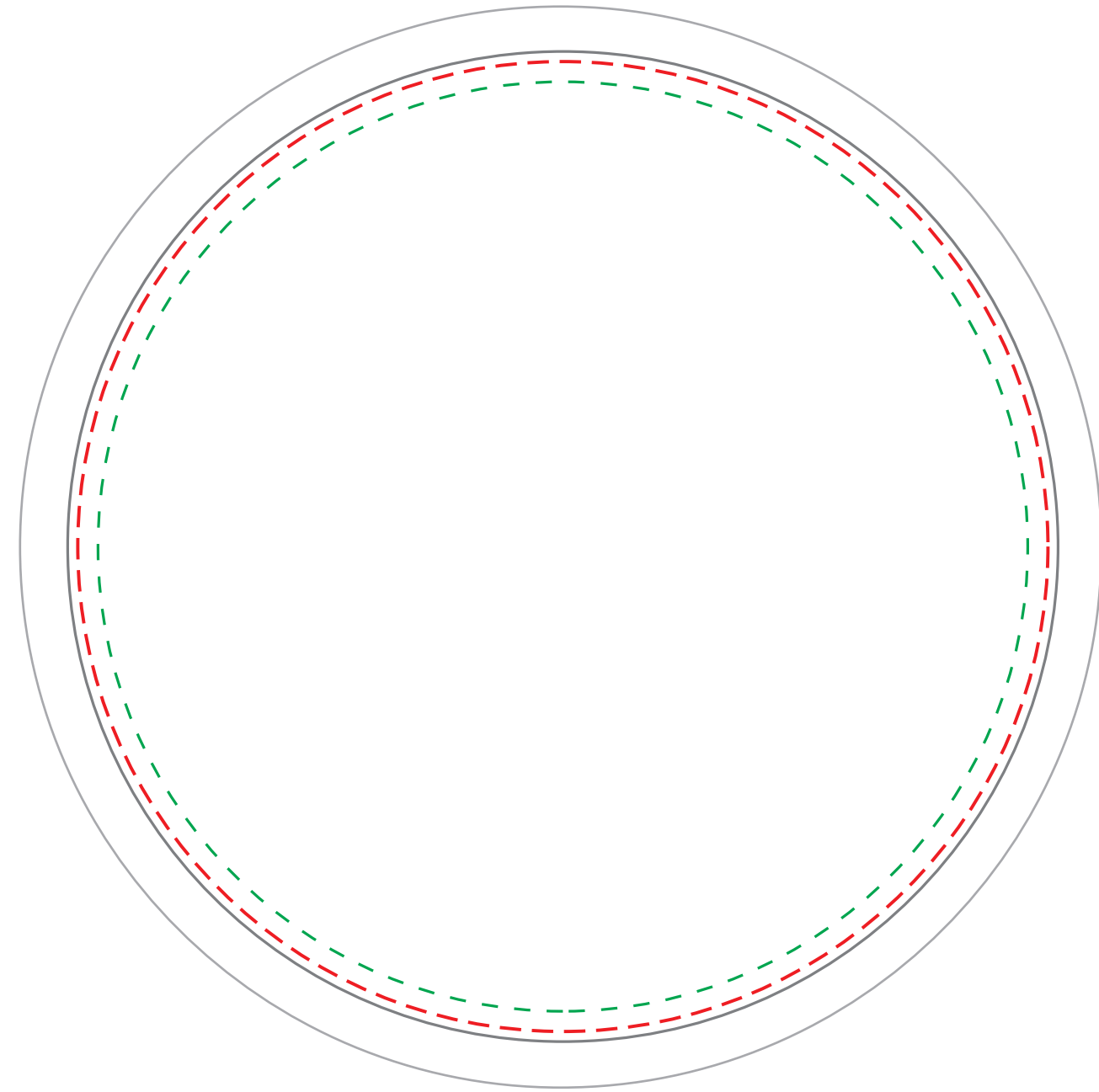
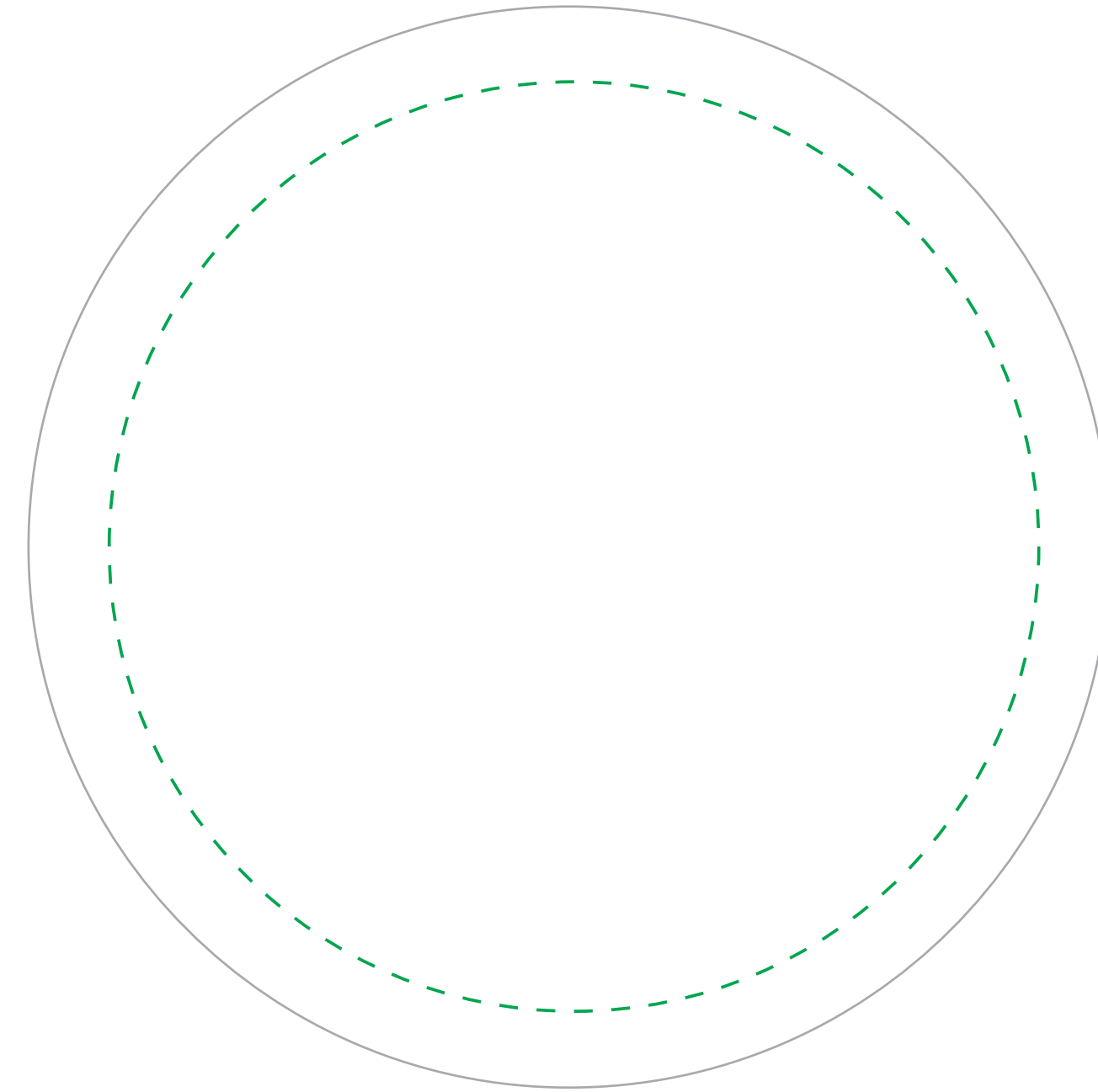


**PMS COLORS:** We print all artwork in process color (CMYK). All PMS colors will be converted and matched to their process color equivalents. To ensure your artwork prints as you expect, we request PMS values for all colors. If PMS values are not supplied we will print the artwork as it was sent in. We are not able to match PMS colors that are in gradients.

Label



Direct Imprint

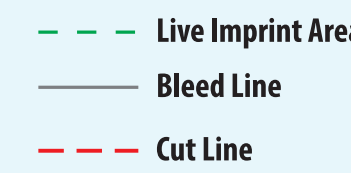


Dashed Line For Imprint Area Only, Will Not Print.

Order #	Item #	Imprint Colors:
XXXXXXX	GT1	XXX

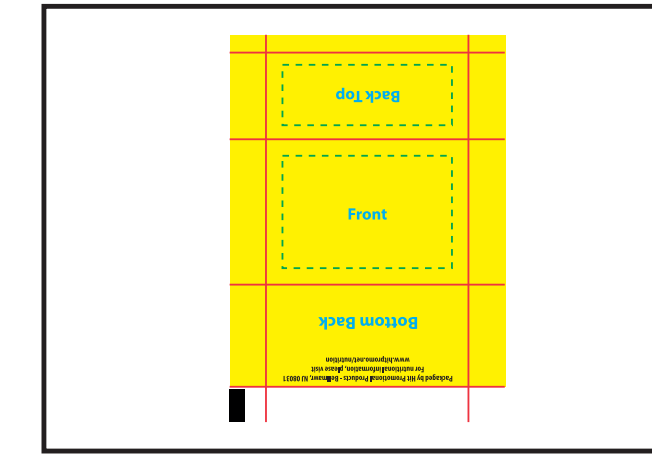
Dashed Line For Imprint Area Only, Will Not Print.

Order #	Item #	Imprint Colors:
XXXXXXX	GT1	XXX

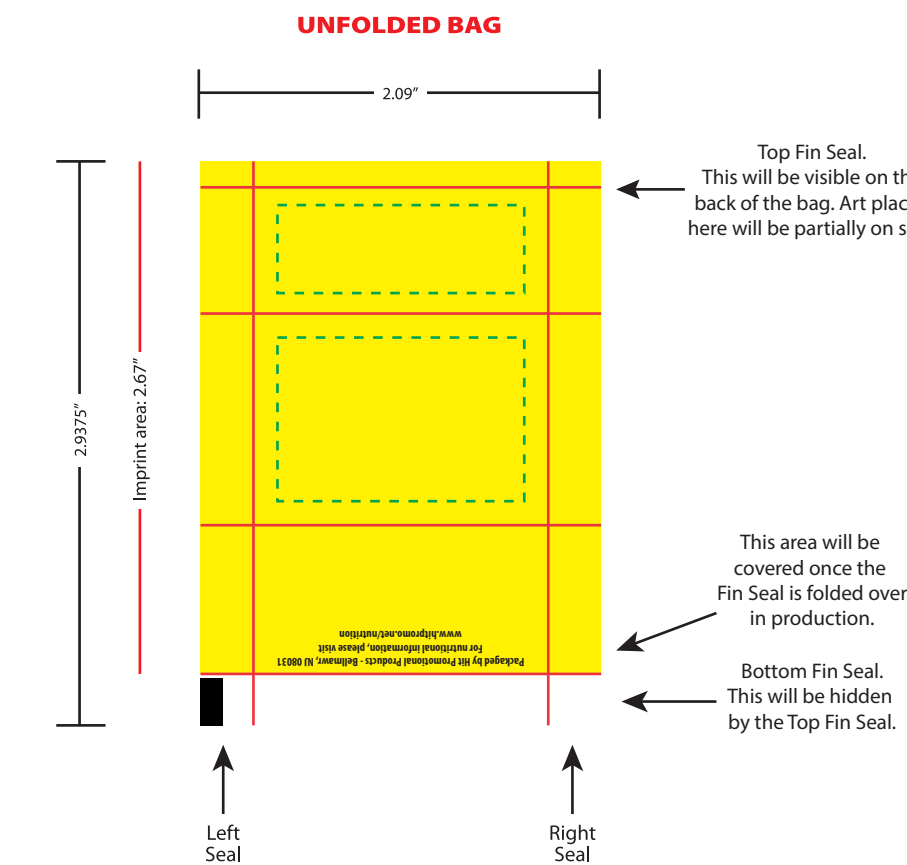


**PMS COLORS:** We print all artwork in process color (CMYK). All PMS colors will be converted and matched to their process color equivalents. To ensure your artwork prints as you expect, we request PMS values for all colors. If PMS values are not supplied we will print the artwork as it was sent in. We are not able to match PMS colors that are in gradients.

**BAG LAYOUT POSITIONS - For Visual Reference Only**



Design artwork on template below



**PROOF**

**The yellow artwork bleed area is the full bleed background printing area. The green dotted line is the safe area that all important text and logos need to be inside or they will be hard to read.**

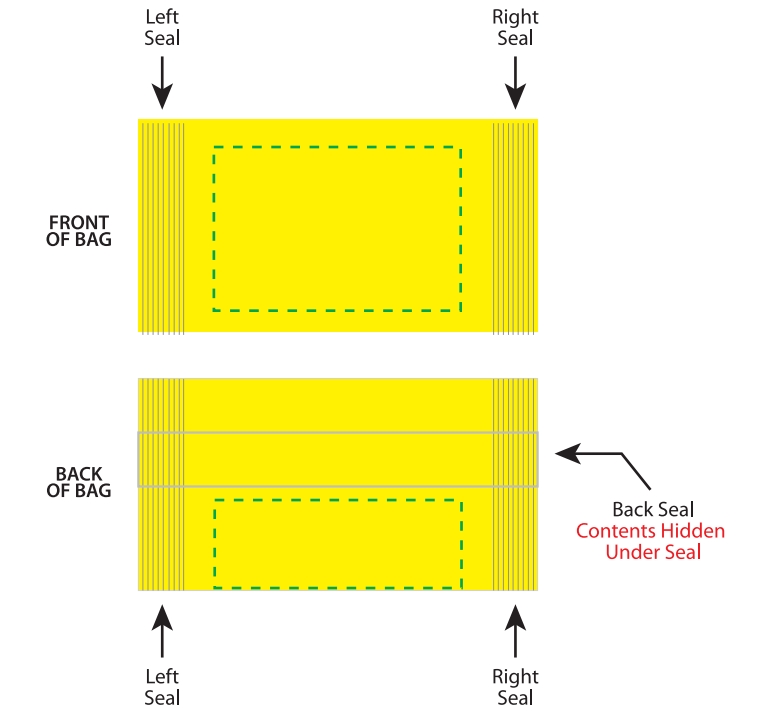
In the process printing and bagging of this product a slight shift of the film may occur. This shifting may cause the artwork to be slightly off center on some packages. Shifting can be up to 1/16" in any direction.

Dashed Line For Imprint Area Only, Will Not Print.

Order #	Item #	Imprint Colors:
XXXXXXX	IWM Mint	XXX



## FOLDED BAG COMPOSITE



## PLEASE BE ADVISED

During the printing and manufacturing process your artwork may shift up to .125" in any direction.

Because of slight shifting in the production of the bags, it is best to have the artwork/color of the TOP SEAL match the BOTTOM SEAL. This will ensure that if shifting occurs the bags will still look seamless and not have a thin strip of misplaced artwork/color.

