

# PRESS FILE



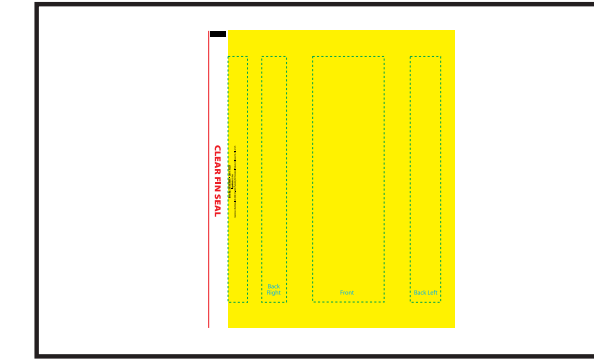
**PROOF**

The yellow artwork bleed area is the full bleed background printing area. The blue dotted line is the safe area that all important text and logos need to be inside or they will be hard to read.

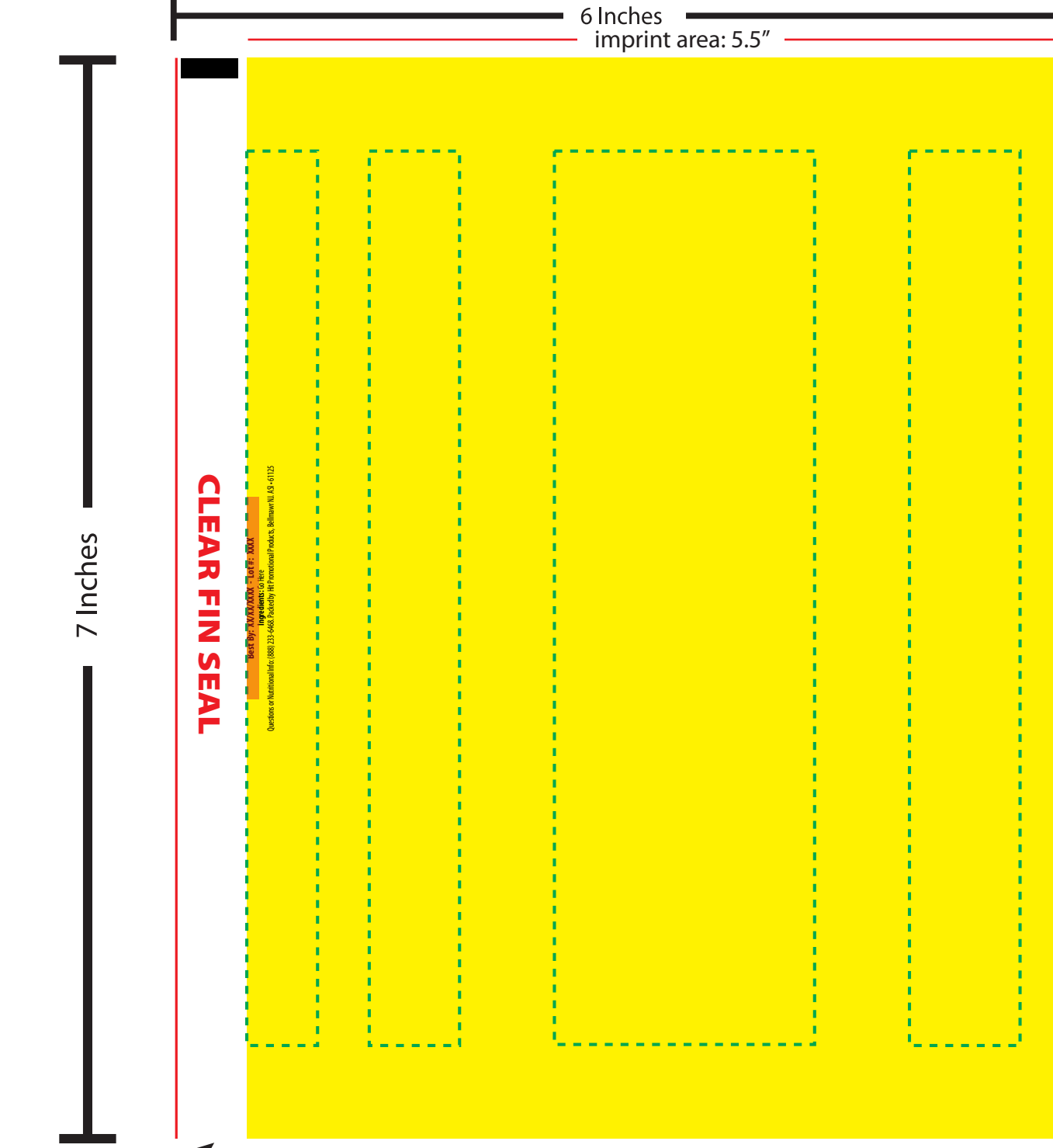
The Purple color represents the clear window that will show the fill.

**PMS COLORS:** We print all artwork in process color (CMYK). All PMS colors will be converted and matched to their process color equivalents. To ensure your artwork prints as you expect, we request PMS values for all colors. If PMS values are not supplied we will print the artwork as it was sent in. We are not able to match PMS colors that are in gradients.

ZAGASNACK LAYOUT POSITIONS - For Visual Reference Only



## UNFOLDED BAG



Left Fin Seal. This will be hidden by the Right Fin Seal.

This area will be covered once the Fin Seal is folded over in production.

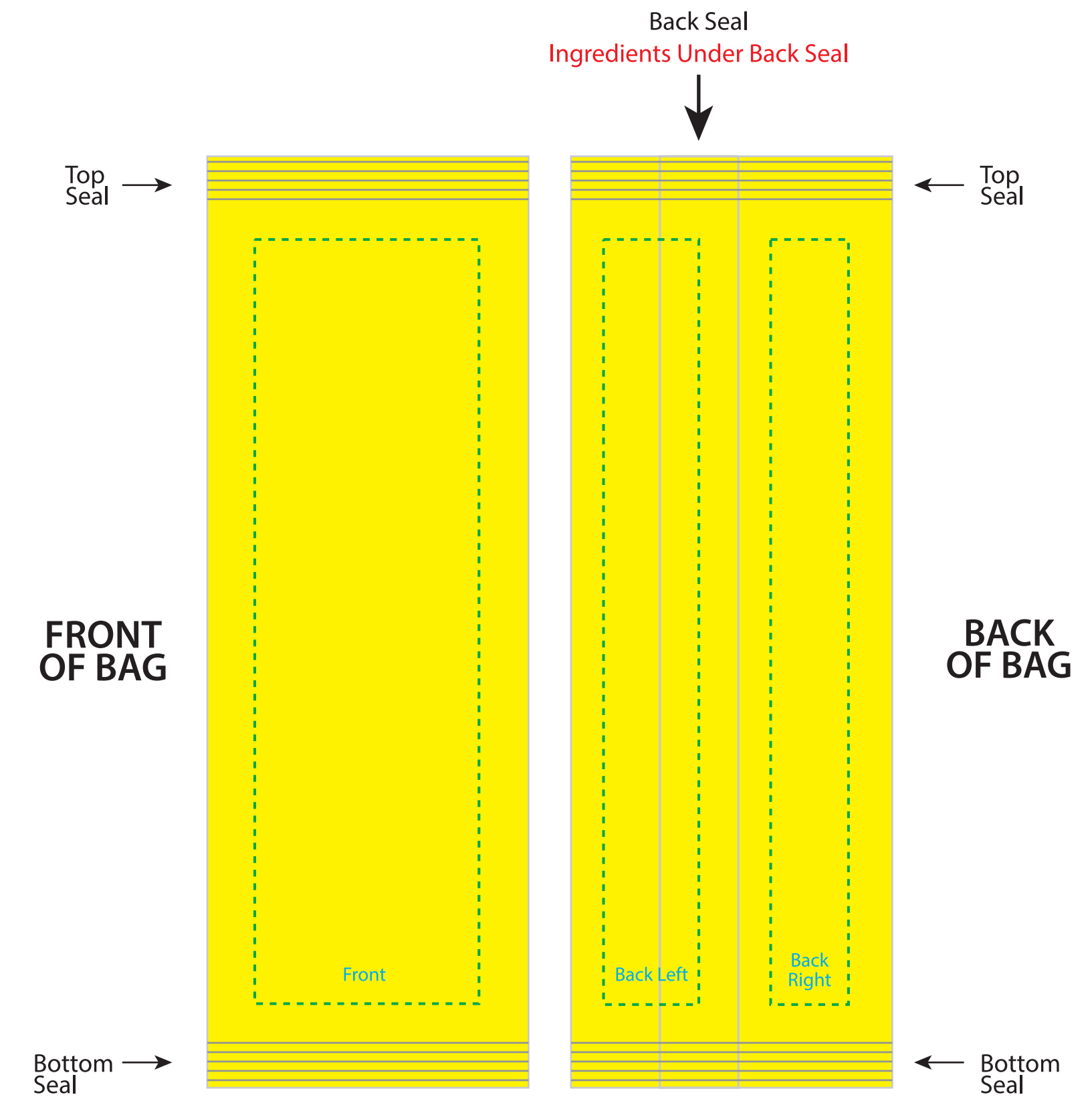
Right Fin Seal. This will be visible on the back of the bag. Art Placed here will be partially on seal.

--- Safe Area  
 Artwork Bleed

Use Purple color to represent the clear window that will show the fill

PMS COLORS

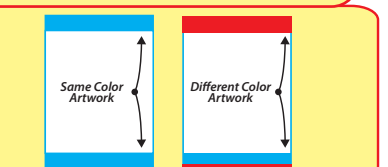
## FOLDED BAG COMPOSITE



## PLEASE BE ADVISED

During the printing and manufacturing process your artwork may shift up to .125" in any direction.

Because of slight shifting in the production of the bags, it is best to have the artwork/color of the TOP SEAL match the BOTTOM SEAL. This will ensure that if shifting occurs the bags will still look seamless and not have a thin strip of misplaced artwork/color.



Dashed Line For Imprint Area Only, Will Not Print.

Order #	Item #	Imprint Colors:
XXXXXXX	ZS7	XXX